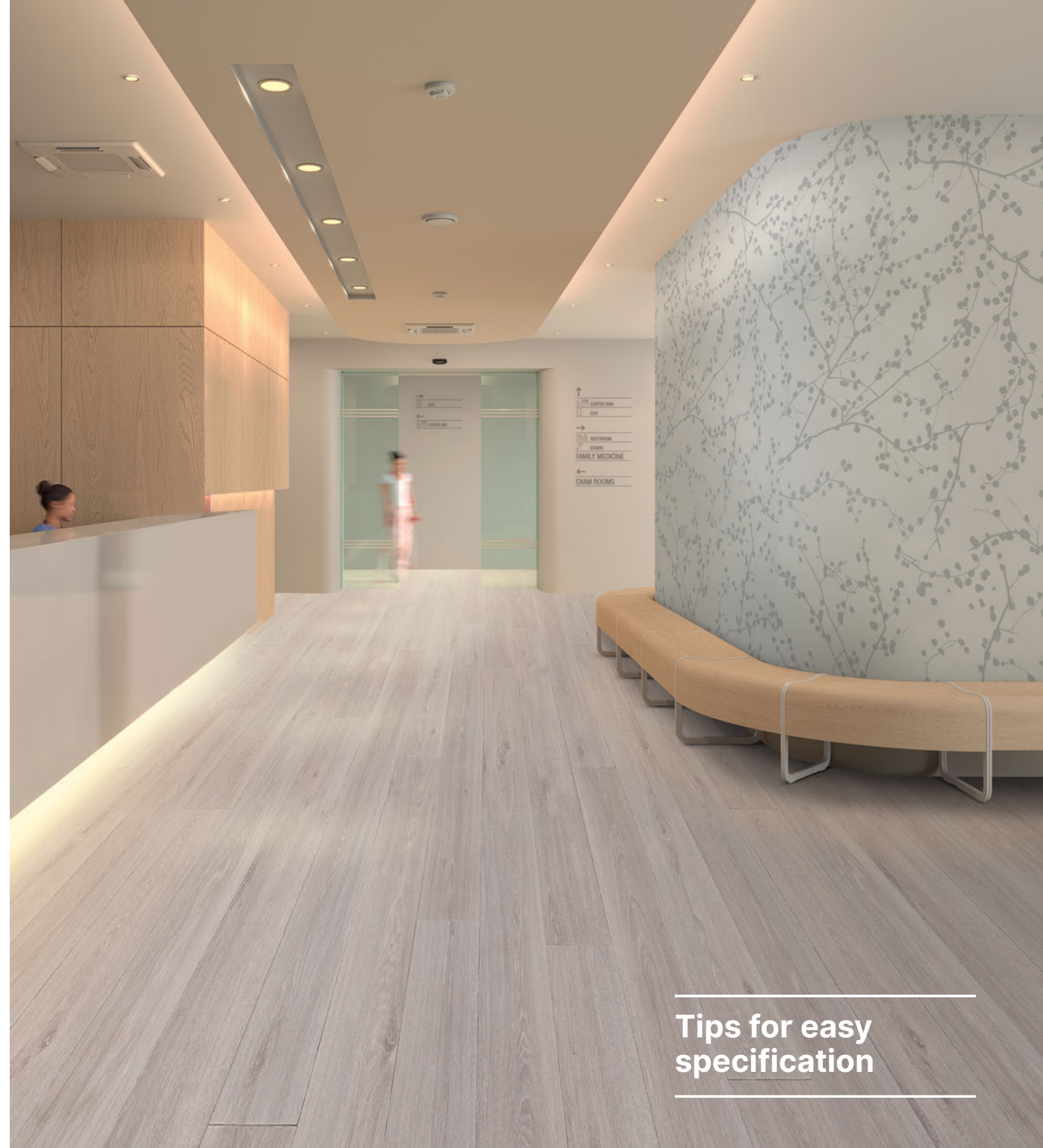


ASIA: Gerflor Asia
 Tel: +86 21 6357 8818
 e-mail: gerflorasia@gerflor.com

gerflor.com
 gerflor.asia

**ARCHITECTURE
 DECORATION
 SPORT
 TECHNOSPECIFIC**

OCT 10-31-2023 Version - Indicative documentation cost USD 1.3
 Gerflor® has a policy of continuous product improvement. It reserves the right to change design and specifications without notice.
 The color and pattern of products in this brochure are for reference use only. The real sample are available from local sales.



Gerflor. Don't forget our complementary ranges!



and *Be* CONNECTED!



Tips for easy
 specification

we care / We act Our Commitments for a Sustainable future

 CARBON FOOTPRINT* -20 % kg CO ₂ equivalent/m ² between 2020 and 2025	 BIOSOURCED CONTENT** 10 % by 2025	 RECYCLED CONTENT 30 % by 2025	 ADHESIVE FREE*** 35 % by 2025	 ANNUAL VOLUME RECYCLED 60 000 t by 2025
---	--	--	--	--



Healthcare
 Specification Guide
 to Floors & Walls Protection



A photograph of a modern radiology reception area. A staff member in blue scrubs is talking on a phone behind a white reception counter. The wall behind her is light green and has the word "RADIOLOGY" in large green letters. The ceiling is white with recessed lighting and a circular light fixture. The floor is made of wood-look planks. To the right, there is a green cushioned bench.

RADIOLOGY

**A new level
of innovation,
quality, service
& teamwork**



Gerflor - Floorings & Wall Products

The Healthcare Specialists

With over 80 years' combined experience in the healthcare sector, together we have built an unrivalled reputation for quality and service.

The Gerflor group is well known as a credible and valued supplier of complete flooring solutions designed specifically for the healthcare market. The constraints of hygiene, slip resistance and acoustic qualities are part of mandatory characteristics for this sector. Our expertise allows us to offer numerous flooring products suitable for all areas of a healthcare facility. Whilst maintaining the technical performance and the design aspect of our floorcoverings, we manufacture our ranges with the environment in mind as well as the health and wellbeing of end users. We have recognised brands ideal for healthcare facilities including our Mipolam, DLW, Taralay, Taraflex® and Tarasafe flooring ranges.



With over 80 years' combined experience in the healthcare sector

MIPOLAM
TARASAFE
TARAFLEX
DLW
TARALAY
CREATION LVT

WALL COVERING
WALL PROTECTION
CORNER PROTECTION
HANDRAILS
DOOR PROTECTION
BED HEAD PROTECTION
INDUSTRIAL PROTECTION



Our tried and trusted Healthcare Solutions

OUR FLOOR AND WALL SOLUTIONS CONTRIBUTE TO A CLEAN AND SAFE BUILDING ENVIRONMENT.



Gerflor Services

TECHNICAL & SPECIFICATION SUPPORT SPECIALISTS

Gerflors' dedicated Healthcare specialists are able to assist you with all your specification needs. Whether it's a new build or refurbishment project we have the expertise and innovations to meet all budgets. Hand in hand with our partners, we work together to propose the optimum solution for the clients needs utilising the most appropriate safe, hygienic and sustainable solutions for the specific applications. We don't stop at just providing specification advice, we can also provide a free site survey, we will visit, assess and audit the facility and make improvement to future proof the building interiors.

The Technical Support team is available to offer advice on the specification and installation of products, including guidance on the latest healthcare building standards and legislation. Be rest assured that Gerflor has a world class pedigree of products that are tried and trusted and deliver each and every time, all backed up by a network of technical, specification and customer support teams.

SAMPLING SUPPORT SERVICES FOR EVERY NEED

We offer a sample service for all our healthcare clients. Whether it's a range overview binder, loose sample (standard or bespoke), supporting literature or if it is something bespoke you need like a mood board or test material, contact us and we will aim to supply the sample for your required need. To request an actual sample, literature or anything else. Please contact our local expert team www.gerflor.asia



SPECIFICATION DOCUMENTS AND BIM OBJECTS

As an architect, engineer, contractor or designer, you can access Gerflor's BIM objects published on the bimobject platform free of charge here:

<https://www.gerflor.asia/services-pro/bim.html>

To download our floors in 3D Studio, Collada or Wavefront formats, just select the color you want in our Interior Designer tool, then click on CAD Service at bottom of the page, fill in the width and length of the area, choose the appropriated format and click on download ! It's easy, simple and quick, click here

<http://gerflor-professional.esignserver3.com/gallery.do>

You will be able to integrate the texture into various professional software such as 3ds Max, Allplan, ArchiCAD, ArCon, Atlantis 3D, AutoCAD, MicroStation, Revit, Rhino, Sketchup, Spirit or even Vectorworks (MiniCAD). You can have a look at the list of compatible software here.

<https://www.gerflor.asia/media/cad-formats-gerflor.pdf>

Comprehensive Healthcare Solutions

Radiology 

Physiotherapy 

Operating Theatres 

Bathroom, Sanitary & Shower 

Logistics Area 

Laundry 

Stairs 



The Gerflor ranges are hygienic and safe, our solutions are suitable for all areas of the healthcare facility.

Corridors 

Kitchens 

Restaurants & Cafeterias 

 Laboratories

 Offices

 Emergency reception

 Examination & Consultation Rooms

 Hospital Wards

 Outpatient & Treatment Rooms

 Entrance & Reception

 Waiting Rooms

Gerflor Services 

Clean Corner System 

Surface Treatments for Vinyl 

Surface Treatments for Linoleum 

Case Studies 

Entrance & Reception Areas

Key considerations when selecting Flooring and Wall Protection products for Entrance & Reception Areas

- ✓ A bright, calm and welcoming environment
- ✓ Resistance to heavy traffic
- ✓ Good slip resistance on floors
- ✓ Practical in design to facilitate building access
- ✓ Protecting walls and corners that are vulnerable to damage
- ✓ Zoning and navigation assistance

Complementary Products

Capping strip*

Cove former*

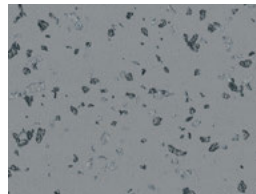
PVC Design Skirting**

Entrance matting

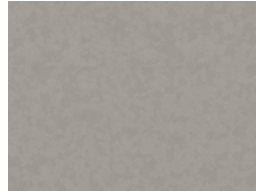
RESILIENT FLOORING

PREMIUM COMPACT

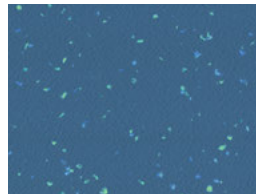
Perfect for extreme traffic resistance, comes with the [Evercare™](#) surface treatment for an unrivaled level of chemical and stain resistance.



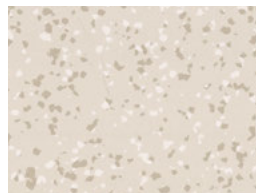
2751 Slam



4350 Elefant



4476 Wattaru



8386 Boa Vista

CREATION 70 Dryback

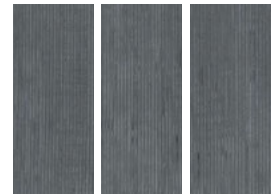
Best in Class LVT for a warm and contemporary finish for front of house applications, suitable for heavy foot traffic.



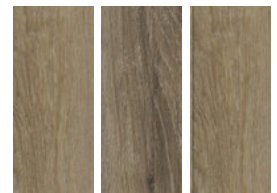
0360 Deep Forest



0535 Douglas



0561 Carassi



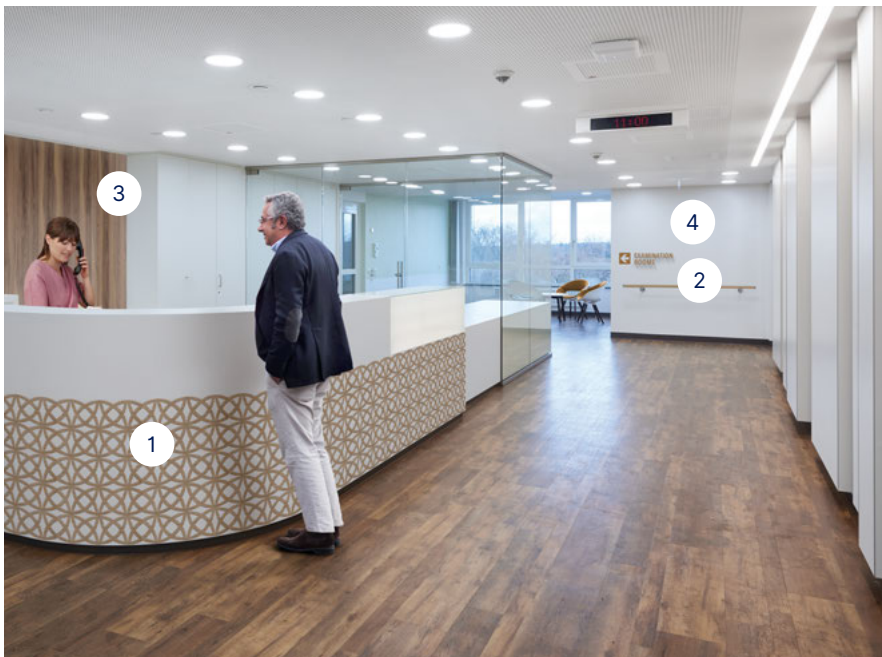
0577 Albion

*Applicable for Premium only

**Applicable for Creation 70 LVT only

WALL PROTECTION

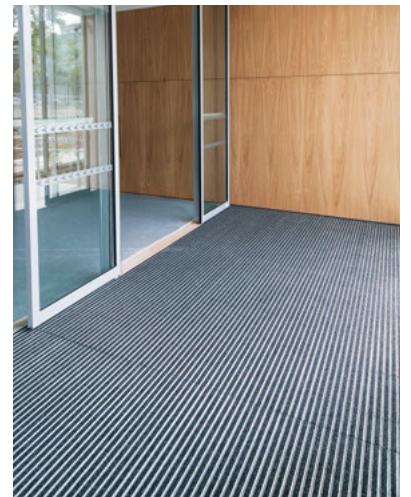
Waiting areas are often subject to scuffs and scrapes from tables, chairs and other movable objects. Corner & edges are also vulnerable to damage from deliveries and other wheeled traffic entering the building



- 1 Decoprint (print option)
- 2 Linea' Touch handrail
- 3 Decowood
 - Profila Corner Guard
 - Contact Protection plate
- 4 Mural Plus

ENTRANCE MATTING

An effective barrier matting system, when correctly specified, will help to minimise the risk of slip accidents caused by wet flooring & reduce maintenance costs in your building.



Choose the right mat with our mat selector

Waiting rooms

Key considerations when selecting Flooring and Wall Protection for Waiting Rooms

- ✓ A bright calm and welcoming environment
- ✓ Resistance to heavy traffic
- ✓ Good slip resistance on floors
- ✓ Practical in design to facilitate building access
- ✓ Protecting walls and corners that are vulnerable to damage
- ✓ Zoning and navigation assistance

Complementary Products

Capping strip

Cove former

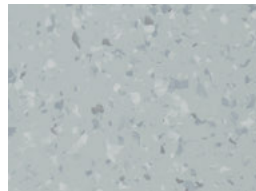
Trims

Pre-formed skirting HSLA*

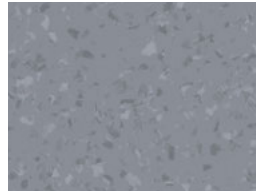
RESILIENT FLOORING

MIPOLAM AMBIANCE ULTRA LUNA

Palette of 25 non directional colours for freedom of design. Treated with [Evercare™](#) surface for easy maintenance.



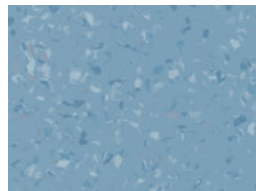
0101 Nature Grey



0102 Steel Grey



0109 Parchment



0113 Sierra Blue

DLW COLORETTE

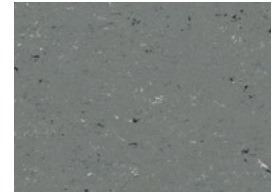
Palette of 19 vivid colours to awaken any interior. Best in class micro-scratch and stain resistance, thanks to Neocare™ finish.



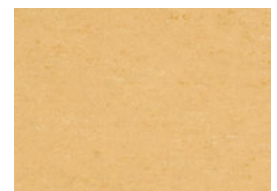
0012 Light Beige



0058 Aluminium Grey



0059 Stone Grey



0071 Straw Beige

*Applicable for DLW Colorette only

WALL PROTECTION SYSTEMS

Waiting areas are often subject to scuffs and scrapes from chairs and other movable objects. Corners and edges are also vulnerable due to high levels of people and wheeled traffic.



- 1 Decochoc
- 2 Protecta Corner Guard
- 3 Linea Punch protection rail
- 4 Mural Ultra Design

Corridors

Key considerations when selecting Flooring and Wall Protection for Corridors

- ✓ Selected products need to deal with heavy traffic both pedestrian and wheeled
- ✓ Products should offer zoning and navigation assistance
- ✓ Flooring must be slip resistant and be able to cope with heavy rolling loads
- ✓ Robust Wall Protection system to protect vulnerable walls and corners
- ✓ Handrails for guidance and support

Complementary Products

Capping strip

Cove former

Trims

Pre-formed skirting HSLA*

RESILIENT FLOORING

MIPOLAM AMBIANCE ULTRA LUNA

Palette of 25 non directional colours for freedom of design. Treated with Evercare™ surface for easy maintenance.



0116 Bubble Blue



0120 Lime Green



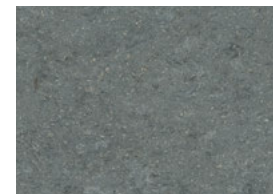
0121 Buff Orange



0125 Celeste

DLW MARMORETTE

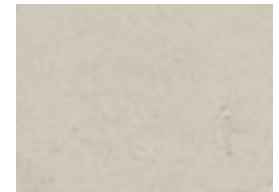
High performance linoleum flooring suitable for heavy duty traffic for hardworking spaces. Best in class micro-scratch and stain resistance thanks to finish.



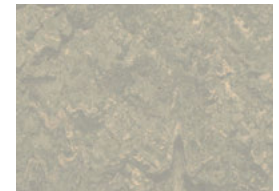
0054 Concrete Patty



0121 Blue Eyes



0252 Light Grey



0253 Pebble Grey

*Applicable for DLW Colorette only

Restaurants & Cafeterias

Key considerations when selecting Flooring and Wall Protection products for Restaurants & Cafeterias

- ✓ A bright, calm and welcoming environment
- ✓ Products that promote hygiene and infection control
- ✓ Quiet and comfortable underfoot
- ✓ Easy clean and low maintenance products
- ✓ Protect walls from damage caused by mobile equipment

Complementary Products

Capping strip*

Cove former*

RESILIENT FLOORING

CREATION 55 Dryback

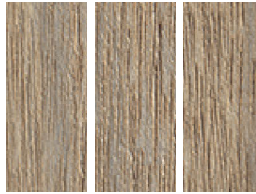
Best in Class LVT for a warm and contemporary finish for front of house applications, suitable for mid / heavy traffic.



0069 Mansfield Natural



0870 Quartet Honey



0871 Bostonian Oak



1281 Palissandro Grey

TARALAY EMOTION

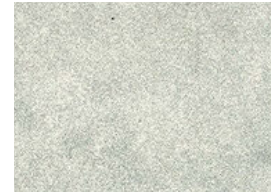
The ideal solution for heavy traffic areas and where indentation resistance is required.



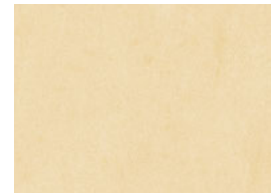
0804 Slate



0806 Anthracite



0811 Calaité



1122 Beige

WALL PROTECTION SYSTEMS

Movable equipment like catering trolleys, tables and chairs can cause scuffs and scrapes to walls. Consider easy to clean surfaces and corner guards to protect walls and corners.



1 Decoprint (print option)

2 Decochoc

Linea' Flex Corner Guard

Kitchens

Key considerations when selecting Flooring and Wall Protection for Kitchens

- ✓ Good slip resistance
- ✓ Resistance to heavy traffic
- ✓ Quiet and comfortable underfoot
- ✓ Easy clean walls and low-cost maintenance
- ✓ Smooth and impervious walls to maintain food hygiene standards

Complementary Products

Capping strip

Cove former

Trims

RESILIENT FLOORING

TARASAFE SUPER

A safety flooring with R12 slip resistance & meets +36 HSE guidelines. Available with a 12 years warranty for peace of mind.



7386 Savana



7767 Dove Grey

TARASAFE PLUS

A safety flooring with R10 slip resistance & meets +36 HSE guidelines. Available with a 12 years warranty. Treated with Sparclean, the most durable treatment on the market



7386 Savana



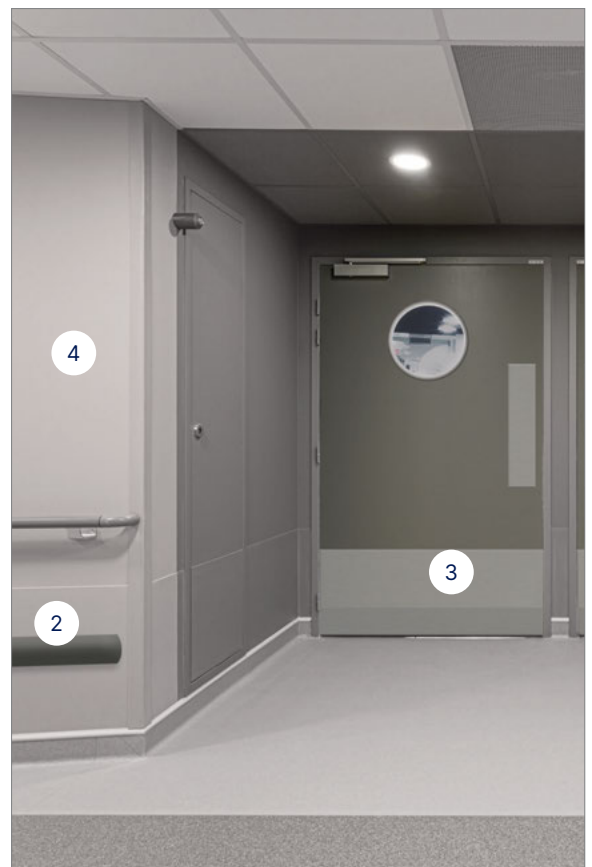
7731 Marbre



7767 Dove Grey

WALL PROTECTION SYSTEMS

Commercial kitchens and food preparation areas require frequent and thorough cleaning to maintain food hygiene standards. Smooth and impervious surfaces are recommended for kitchen walls as an alternative to traditional ceramic tiles and grouting that can harbour bacteria and crack under impact.



- 1 Decoclean
- 2 Impact rail
- 3 Plac'inox
- 4 Mural Plus

Offices

Key considerations when selecting Flooring and Wall Protection products for Offices Areas

- ✓ A bright, calm and welcoming environment
- ✓ High acoustic features for better work environment
- ✓ Products that promote hygiene and infection control
- ✓ Quiet and comfortable underfoot
- ✓ Easy clean and low maintenance products
- ✓ Protect walls from damage caused by tables and chairs

Complementary Products

Entrance and Reception Area

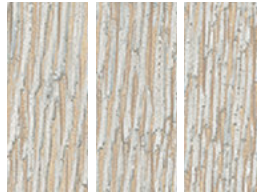
RESILIENT FLOORING

CREATION 55 Dryback

Best in Class LVT for a warm and contemporary finish for front of house applications, suitable for mid / heavy traffic.



0465 Cambridge



0584 White Lime



0849 Cedar Pure



0859 Quartet Fauve

TARALAY EMOTION

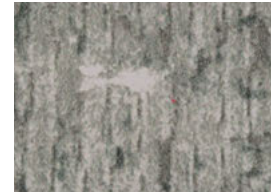
The ideal solution for heavy traffic areas and where indentation resistance is required



0707 Natural



0708 Dark



0712 Smoke



1101 Cream

WALL PROTECTION

Waiting areas are often subject to scuffs and scrapes from tables, chairs and other movable objects. Corner & edges are also vulnerable to damage from deliveries and other wheeled traffic entering the building



1 Mural Plus

Emergency Reception

Key considerations when selecting Flooring and Wall Protection products for A&E Receptions

- ✓ A bright, calm and welcoming environment
- ✓ Zoning and navigation assistance
- ✓ Resistance to heavy traffic
- ✓ Good slip resistance
- ✓ Easy clean and low maintenance
- ✓ Protect walls from mobile equipment that can cause damage
- ✓ Handrails to offer support and guidance

Complementary Products

Capping strip

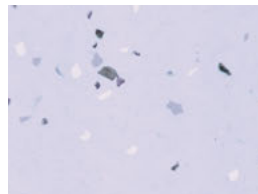
Cove former

Trims

RESILIENT FLOORING

MIPOLAM STYL

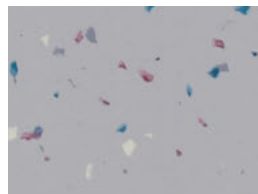
High performance homogeneous flooring treated with [Evercare™](#) for outstanding chemical and stain resistance.



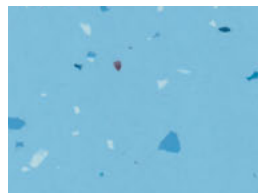
4003 Porpora



4007 Crema



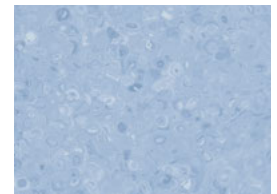
4015 Lento



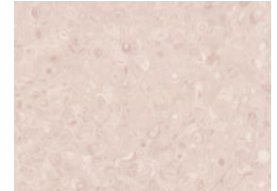
4022 Luce Blu

MIPOLAM CONCEPT

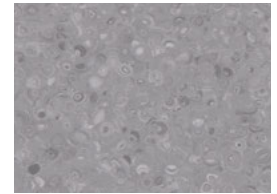
Good resistance to chemical and scuffing, [Evercare™](#) surface treatment upgraded.



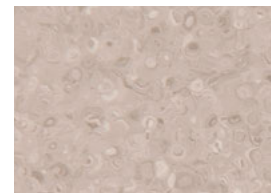
5025 Lagoon



5031 Mocca Foam



5047 Middle Marlyn



5048 Fairy dust

WALL PROTECTION SYSTEMS

Waiting areas are often subject to scuffs and scrapes from chairs and other movable objects. Corners and edges are also vulnerable from high levels of people and wheeled traffic.



- 1 Decoprint (print option)
- 2 Linea' Touch+ handrail
- 3 Decowood
- 4 Profila Corner Guard
Contact Protection plate
- 5 Mural Plus

Examination & Consultation Rooms

Key considerations when selecting Flooring and Wall Protection products for Examination and Consultation Rooms

- ✓ A bright, calm and welcoming environment
- ✓ Quiet and comfortable underfoot
- ✓ Good slip-resistance
- ✓ Easy cleaning and low maintenance
- ✓ Protect walls and corners from damage caused by mobile equipment

Complementary Products

Capping strip

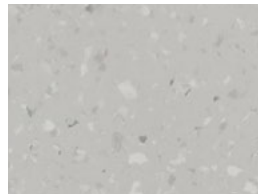
Cove former

Trims

RESILIENT FLOORING

MIPOLAM ATLAS

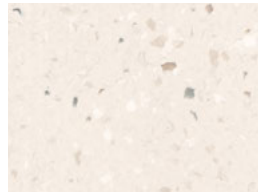
Excellent abrasion resistance, suitable for heavy duty area, [Easycare™](#) surface treatment.



6001 Argilla



6004 Creamy White



6013 Apricot



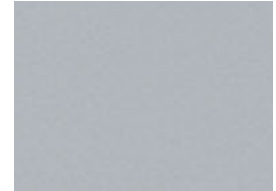
6014 Primrose

TARALAY IMPRESSION COMFORT

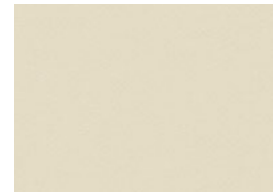
Excellent 19dB sound rating, available in a mix of vibrant colours and wood effect designs. Outstanding indentation resistance and recovery. Treated with ProtecSol® 2 surface for easy maintenance.



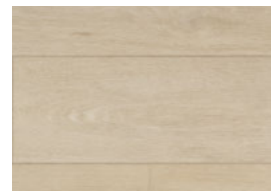
0727 Sycamore Vanilla



0832 Uni Matt Grey



0848 Uni Matt White



1055 Nature Oak Clear

WALL PROTECTION SYSTEMS

Examination and consulting rooms are subject to high volumes of activity. Hospital staff are regularly tasked with manoeuvring beds, wheelchairs, mobile medical equipment, service trolleys and other wheeled traffic in confined spaces, increasing the likelihood of impact damage to walls.



- 1 Decochoc
- 2 Profila Corner Guard
- 3 Combo Bedkit
- 4 Mural Plus

Hospital Wards

Key considerations when selecting Flooring and Wall Protection for Hospital Wards

- ✓ Products that promote hygiene and infection control
- ✓ Resistance to stains and chemicals
- ✓ Quiet and comfortable underfoot
- ✓ Good slip resistance
- ✓ Easy clean and low maintenance
- ✓ Handrails to offer support and guidance
- ✓ Protection of vital medical equipment
- ✓ Protection of vulnerable corners from wheeled traffic and mobile beds

Complementary Products

Capping strip

Cove former

Trims

Pre-formed skirting HSLA*

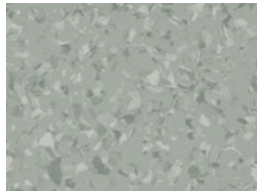
RESILIENT FLOORING

MIPOLAM AMBIANCE ULTRA TERRA

Palette of 25 non directional colours for freedom of design. Treated with Evercare™ surface for easy maintenance.



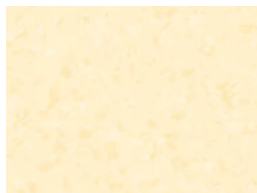
0202 Pearl Grey



0205 Fossil Grey



0219 Mint



0221 Corn

TARALAY EMOTION

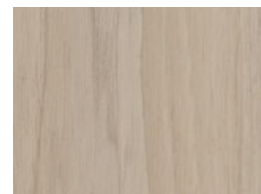
The ideal solution for heavy traffic areas and where indentation resistance is required.



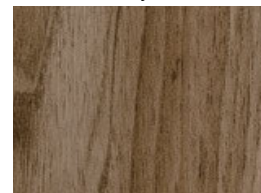
0402 Chinon Light



0503 Fontenay Honey



0504 Fontenay Cream



0505 Fontenay Brown

*Applicable for DLW Colorette only

WALL PROTECTION SYSTEMS

Ward and hospital accommodation is subject to high volumes of activity. Hospital staff are regularly tasked with manoeuvring beds, wheelchairs, mobile medical equipment, service trolleys and other wheeled traffic in relatively confined spaces, increasing the likelihood of impact damage to walls, corners and doors.



- 1 Decochoc
- 2 Escort Duo Handrail
- 3 Impact protection rail
 - Cornea Corner Guard
 - Contact Protection plate
 - Combo Bedkit
- 4 Mural Plus

Outpatient & Treatment rooms

Key considerations when selecting Flooring and Wall Protection products for Outpatient & Treatment Rooms

- ✓ A bright, calm and welcoming environment
- ✓ Products that promote hygiene and infection control
- ✓ Quiet and comfortable underfoot
- ✓ Easy clean and low maintenance products
- ✓ Protect walls from damage caused by mobile equipment
- ✓ Protection of vital medical equipment

Complementary Products

Capping strip

Cove former

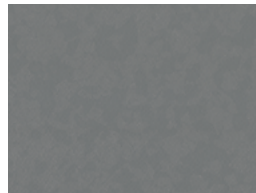
Trims

Pre-formed skirting HSLA*

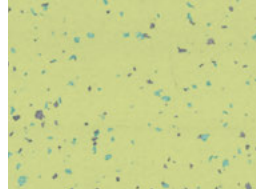
RESILIENT FLOORING

PREMIUM COMFORT

High performance flooring with excellent acoustic and shock absorption properties and safe underfoot cushioning. Treated with Evercare™ surface for easy maintenance.



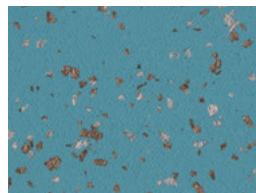
3791 Slate Grey



4015 Guinea



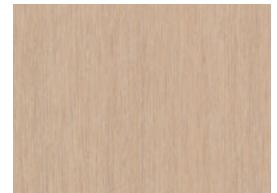
4342 Juara



8627 Allegorie

TARALAY IMPRESSION COMFORT

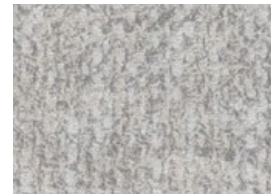
The ideal solution for medium traffic areas where indentation resistance and good acoustics are required. Treated with ProtecSol® 2 surface for easy maintenance.



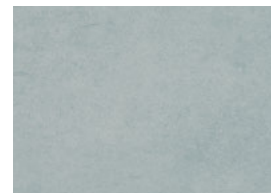
0720 Infinity Aube



0745 Nest Metal



0770 Gentlemen Clear



1024 Cemento Napoli

*Applicable for DLW Colorette only

WALL PROTECTION SYSTEMS

Outpatient and treatment rooms are subject to high volumes of activity. Hospital staff are regularly tasked with manoeuvring beds, wheelchairs, mobile medical equipment, service trolleys and other wheeled traffic in confined spaces, increasing the likelihood of impact damage to walls.



- 1 Combo Bedkit
- 2 Decochoc
Corner protection
- 3 Mural Plus

Radiology

Key considerations when selecting Flooring and Wall Protection products for Imaging Areas

- ✓ A bright, calm and welcoming environment
- ✓ Limits electrostatic charge
- ✓ Quiet and comfortable underfoot
- ✓ Low resistance to rolling loads
- ✓ Impervious surfaces that are smooth and easy to clean
- ✓ Protect walls from damage caused by mobile medical equipment

Complementary Products

Gerflor Clean Corner System

Capping strip

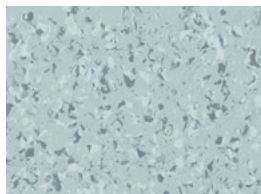
Cove former

Trims

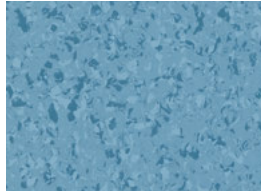
RESILIENT FLOORING

MIPOLAM EL7

Static-dissipative flooring available in a palette of 10 semi-directional designs coordinated to the Mipolam Affinity range. Treated with [Evercare™](#) surface for easy maintenance.



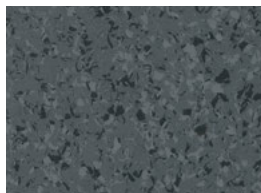
4110 Violet Grey



4116 Sapphire



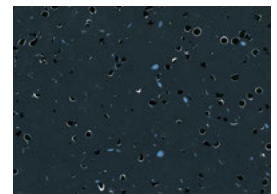
4132 Citrine



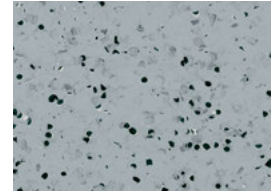
4159 Grey Storm

MIPOLAM EL5

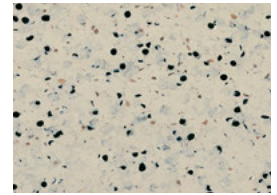
Permanent conductive flooring available in a palette of 6 colours in a non directional design. Treated with [Evercare™](#) surface for easy maintenance.



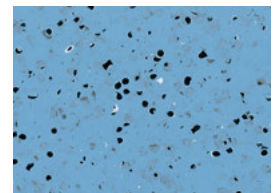
0351 Black



0352 Grey



0353 Beige



0354 Blue

WALL PROTECTION SYSTEMS

Mobile equipment is frequently moved around in imaging areas increasing the potential for damage. These areas require impervious surfaces that are smooth and easy to clean with a resistance to impact damage.



1 Decoclean

2 Profil' Inox Corner Guard

Mural Plus

Laboratories

Key considerations when selecting Flooring and Wall Protection for Laboratories

- ✓ Hygiene and infection control
- ✓ Resistance to stains and chemicals
- ✓ Good slip resistance
- ✓ Quiet and comfortable underfoot
- ✓ Easy clean and low-cost maintenance

Complementary Products

Gerflor Clean Corner System

Capping strip

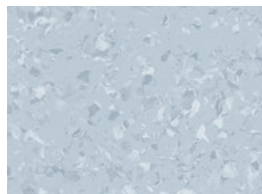
Cove former

Trims

RESILIENT FLOORING

MIPOLAM AMBIANCE ULTRA TERRA

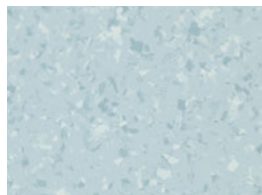
Palette of 25 non directional colours for freedom of design. Treated with [Evercare™](#) surface for easy maintenance.



0203 Steam Grey



0212 Almond



0214 Foggy Blue



0217 Sprout

MIPOLAM TROPLAN PLUS

Directional design available in 18 references. Matt finish surface, enhanced design & color.



1002 Beige



1033 Brown



1036 Medium Blue



1040 Dark Grey

WALL PROTECTION SYSTEMS

Strict hygiene standards in laboratories require robust building materials that can withstand extensive cleaning. Mobile trolleys are frequently moved around increasing the potential damage to walls and corners.



- 1 Decoclean
- Plac'Inox
- Decochoc
- Protecta Corner Guard
- Impact protection rail
- Door Protection

Operating Theatres & Clinical Areas

Key considerations when selecting Flooring and Wall Protection for Operating Theatres & Clinical Areas

- ✓ Hygiene and infection control
- ✓ Easy to clean walls and floors
- ✓ Resistance to stains and cleaning chemicals
- ✓ Flooring to have electrostatic control
- ✓ Walls protected from impact damage

Complementary Products

Gerflor Clean Corner System

Capping strip

Cove former

Trims

RESILIENT FLOORING

MIPOLAM AMBIANCE ULTRA TERRA

Palette of 25 non directional colours for freedom of design. Treated with [Evercare™](#) surface for easy maintenance.



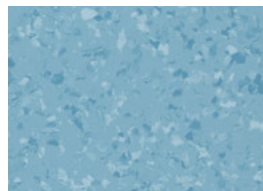
0201 Ice Grey



0209 Cream



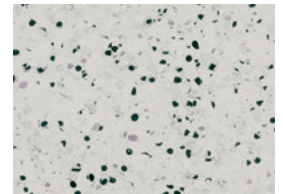
0215 Water Blue



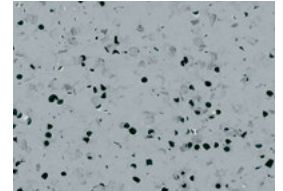
0216 Sapphire

MIPOLAM EL5

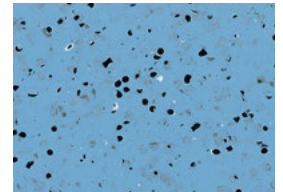
High performance ESD conductive flooring treated with [Evercare™](#) for excellent resistance to stains and chemicals.



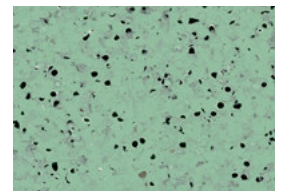
0350 Light Grey



0352 Grey



0354 Blue



0355 Green

WALL PROTECTION SYSTEMS

Strict hygiene standards in intensive healthcare environments require robust building materials that can withstand intensive cleaning. Consider impervious surfaces that are smooth and easy to clean, with a resistance to impact damage.



1 Decoclean

Impact protection rail

Cornea Corner Guard

Mural Plus

Physiotherapy Areas

Key considerations when selecting Flooring and Wall Protection products for Physiotherapy Areas

- ✓ A bright, calm and welcoming environment
- ✓ Products that promote hygiene and infection control
- ✓ Quiet and comfortable underfoot
- ✓ Easy clean and low maintenance products
- ✓ Protect walls and corners from damage caused by mobile equipment

Complementary Products

E120 Adhesives

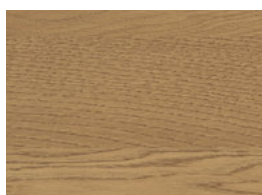
Cove Formers & Caps

BE TX threshold

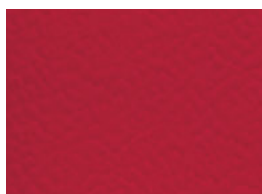
RESILIENT FLOORING

TARAFLEX MULTI-USE

Designed with a high resistance to tables and chairs, the 6,2mm thick multi-purpose vinyl flooring is the perfect solution for sports and non-sports activities.



5742 Wood Oak



6180 Red



6430 Blue



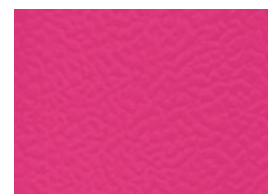
6557 Forest

TARAFLEX EVOLUTION

This 7,5mm thick flooring is ideal for a variety of sports and leisure activities from children to professional players. The choice for all international events when installed over a sub-construction.



5742 Wood Oak



6159 Pink



6211 Gold



6431 Teal

WALL PROTECTION SYSTEMS

Patients are regularly wheeled in an out of physiotherapy areas which risk gouging wall surfaces if a collision were to occur. Wall and corners need to be protected from impact damage.



1 Decochoc

2 Protecta Corner Guard

Escort Handrail

Bathroom, Sanitary & Shower

Key considerations when selecting Flooring and Wall Protection for Bathroom & Shower Rooms

- ✓ Good slip resistance
- ✓ Watertight floors and walls
- ✓ Resistance to stains and chemicals
- ✓ Easy clean and low-cost maintenance

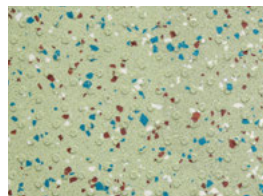
Complementary Products

- Cove former
- Diminishing profile
- Shower Threshold Profile
- Vertical Drain
- Horizontal Drain

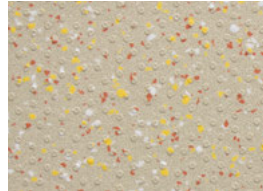
RESILIENT FLOORING

TARASAFE ULTRA H₂O

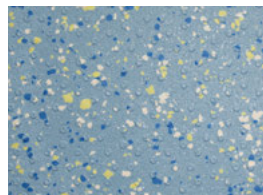
High performance slip resistant safety flooring for wet and dry, barefoot and shod applications, meets +36 HSE guidelines.



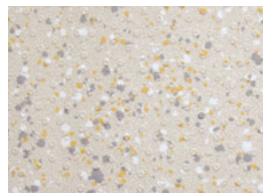
7513 Seagrass



7314 Sand



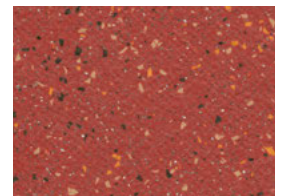
7418 Marine



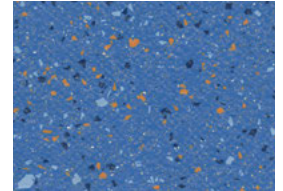
7325 Seashore

TARASAFE ULTRA

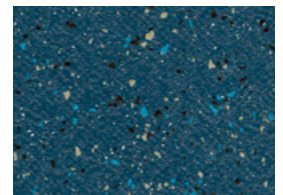
Outstanding safety flooring where slip-resistance, durability and hygienic conditions are required, meets +36 HSE guidelines. Treated with Sparclean, the most durable treatment on the market.



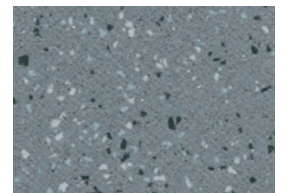
4128 Ruby



4470 Sapphire



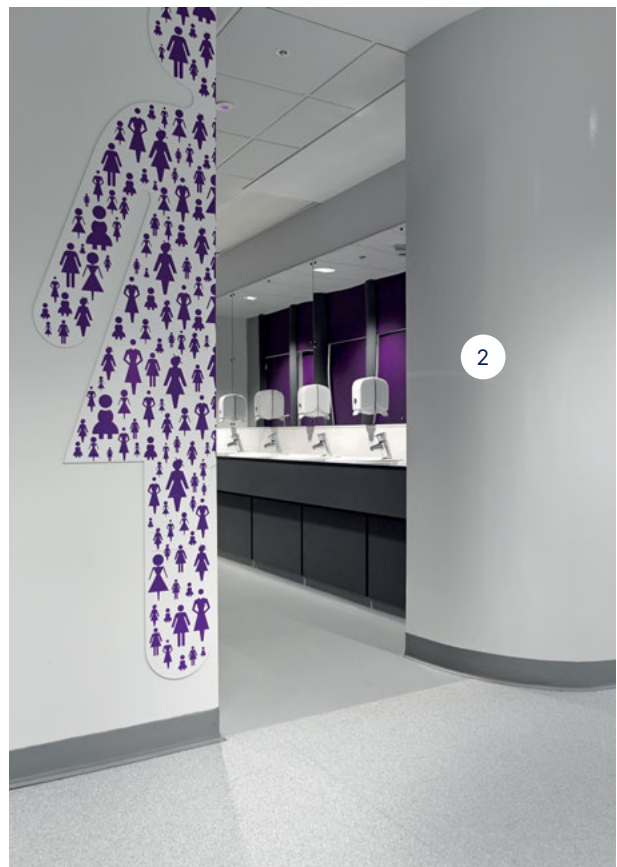
4472 Moonstone



8709 Granite

WALL PROTECTION SYSTEMS

Bathrooms and shower rooms are areas where cleanliness is a priority. Mural Calypso is smooth and easy to clean and offers an impermeable barrier to moisture and is a hygienic alternative to ceramic tiles, removing the need for grout which can harbour bacteria.



- 1 Mural Calypso
 - Decochoc H2O
 - Decochoc
 - Profila Corner Guard
- 2 Mural Plus

Stairs

Complementary Products

Grooved PVC Stair
Nosing Straight Angles

Stair Clip System

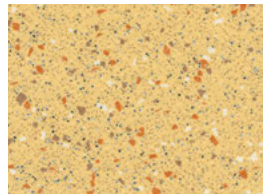
Aluminium Stair Nosing

Grooved PVC Stair Nosing

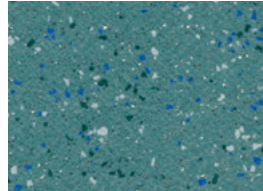
RESILIENT FLOORING

TARASAFE ULTRA

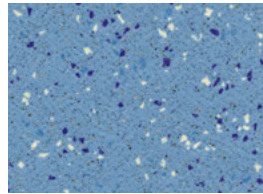
Outstanding safety flooring where slip-resistance, durability and hygienic conditions are required, meets +36 HSE guidelines. Treated with Sparclean, the most durable treatment on the market.



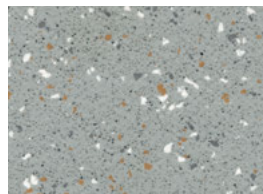
4323 Sandstone



4460 Topaz



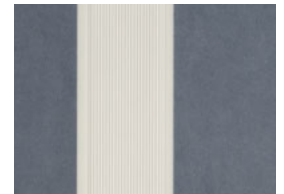
7482 Halite



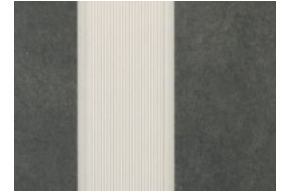
8704 Pebble

TARASTEP PRO

A Complete stair solution compliant with «access for all» requirements. It provides a 70% colour contrast on stair-nosing.



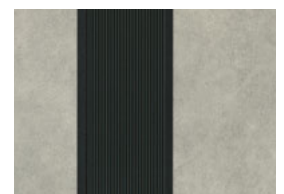
2334 Blue Grey & Clear



2341 Black & Light Grey



2332 Silver & Dark Grey



2336 Brescia & Black



1 Escort Handrail

2 Tarastep Pro

Logistics Area

Key considerations when selecting Flooring and Wall Protection for Back of House Storage Areas

- ✓ Resistance to heavy rolling loads
- ✓ Resistance to heavy traffic
- ✓ Easy clean and low-cost maintenance
- ✓ Robust wall protection solution to protect the building from damage and improve safety for pedestrians

Complementary Products

Cove Formers & Caps

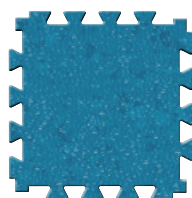
Aluminium profile

PVC ramp*

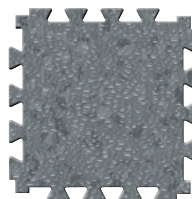
RESILIENT FLOORING

GTI MAX CONNECT

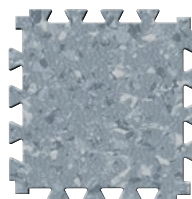
A fast renovation solution which can be installed over most existing floors where minimal sub floor preparation is required.



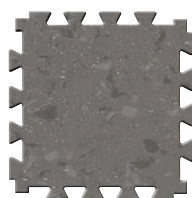
0230 Blue



0235 Dark Grey



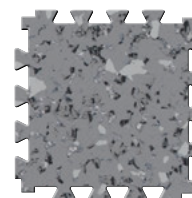
0253 Aluminium



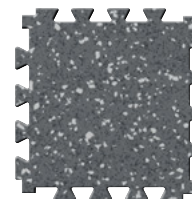
0262 Libeccio

ATTRACTION

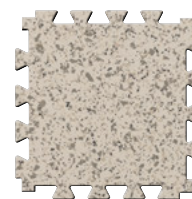
A fast track easy solution with interlocking edges which allows for rapid loose lay installation and replacement. Treated with [ProtecSol®2](#) surface for easy maintenance.



2740 Harlem Soft



2741 Brooklyn



2743 Central Park



2744 Queens Soft

* only available for GTI MAX Connect

WALL PROTECTION SYSTEMS

Wheeled traffic such as industrial bins and carts can cause significant damage when accidental collisions occur. Motorised traffic including delivery vans and motorised trolleys are also potential hazards in service areas.



- 1 Elasto' Flex Corner Guard
- 2 Elasto' Punch Protection Rail
- 3 Mural Plus

Innovations for Clinical Healthcare Environments

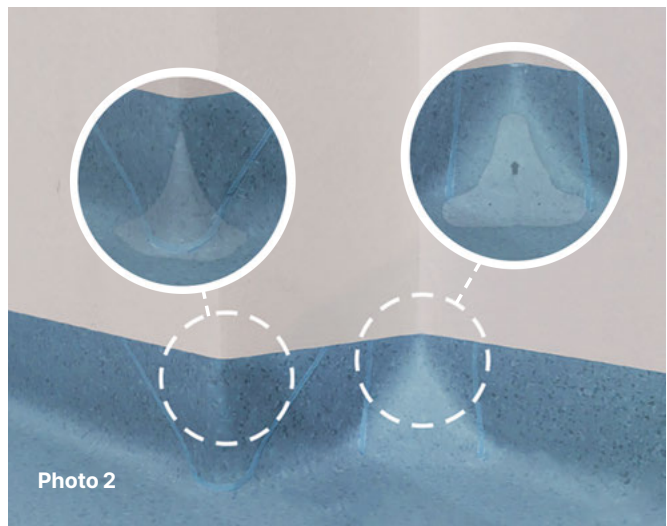
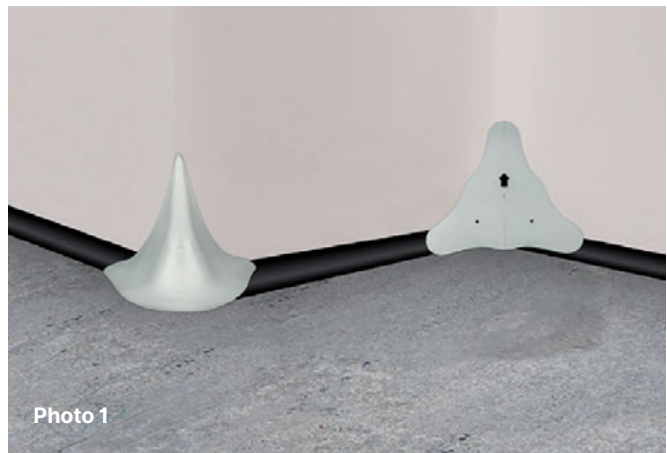
INNOVATIVE CLEAN CORNER SYSTEM

A total and complete solution for installing corners that aids the control of contamination.

Controlling contamination in general healthcare environments as well as ultra clean areas such as burns units, pharmacies and operating theatres is always a challenge. Corners, in particular, are where most of the imperfections are found:

- Their shape makes cleaning and decontamination difficult.
- Poorly welded, they can tear or sag under the weight of traffic.
- Weakened by use, they end up losing their water-tightness.

In partnership with cleaning professionals, Gerflor has developed a innovative patented Corner System. Thanks to ultra-resistant and versatile profiles (**Photo 1**), Clean Corner System is suitable for all your projects, and delivers perfect results (**Photo 2**) with Gerflor floorings.



Watertight



Resistant &
Durable



Hygienic



Adaptative



Esthetic

**Clean Corner System
wins Innovation
& Product Design
Award**

OUTSTANDING SURFACE TREATMENTS

Our surface treatments are perfect for healthcare environments with unrivalled levels of chemical & stain resistance, reducing maintenance time and cost



- No waxing or polishing is needed to maintain the floor appearance or color brightness



- Easy to maintain and no wax for life

- Water and detergents saving

- Lower environmental impact and carbon footprint

- Matt effect for enhanced and ultra-realistic design



- The best chemical stain resistance surface treatments

Exclusive surface treatments approved for over 20 Years: impenetrable barrier against stains and chemicals. Longer expectancy.

Highly durable: The UV laser cross-linking provides superior durability and an even surface thickness.



Standard Linoleum



Gerflor

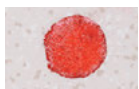


GERFLOR:
EVEN THICKNESS



COMPETITOR:
MISSING TREATMENT
AND UNEVEN THICKNESS

Staining Tests Before cleaning



Results After Cleaning

Using A neutral Detergent



Stain 1: Betadine® Alcoholic Solution

After 5 Minutes

After 60 Minutes



Stain 2: Eosin

After 5 Minutes

After 60 Minutes



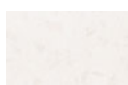
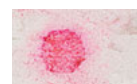
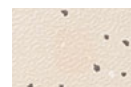
Stain 3: Permanent Marker®

Evercare™
Protecsol® 2
Neocare™

Other
Homogeneous
Sheets

Rubber

VCT



Best Application

Area	Premium	DLW	Homogenous products				
			Mipolam Styl	Mipolam Ambiance Ultra	Mipolam Concept	Mipolam Atlas	Mipolam Troplan plus
Entrance&Reception areas	***		**				
Waiting rooms		***	***	***	***		
Corridors		***	***	***	**		
Restaurants&Cafeterias			***				**
Kitchens							
Offices		***			***		
Emergency Reception	***		***	***	***	**	
Examination&Consultation Rooms	***		***	***		**	
Hospital Wards			***	***	***	**	**
Outpatient&Treatment rooms	***		***	***	***	**	**
Radiology							
Laboratories	***		***	***			**
Operating Theatres&Clinical Areas			***	***			
Physiotherapy Areas							
Bathroom, Sanitary&Shower							
Stairs							
Logistics Area							

*** Best ** Better * Good

	Printed rolls			LVT		Special products				
Mipolam 180 / 150	Taralay Impression	Taralay Emotion	Transit Classic	Creation 70	Creation 55	Tarasafe Ultra (H2O)	Tarastep	EL5 (GTI EL5) / EL7	GTI / Attraction	Taraflex
	**			**						
		**			**					
**		**								
		***	**		***					

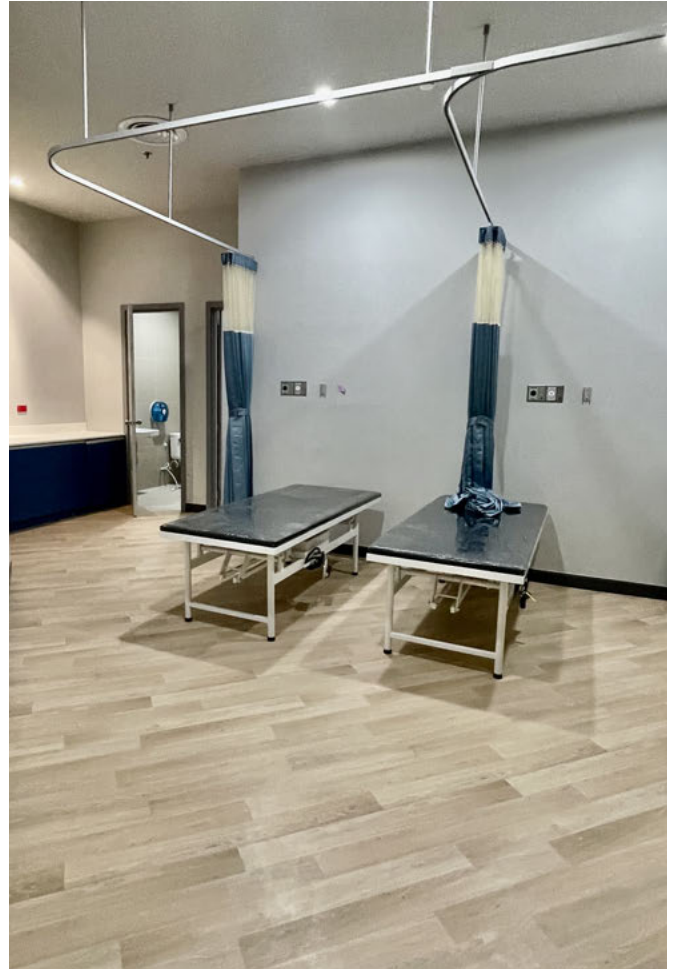
		***	**		***					
*										
	***	**								
*		***	**		**					
**	***	**								

*										
**								***		
		**								***

						***	***			

Play with colors!





Play with colors!

